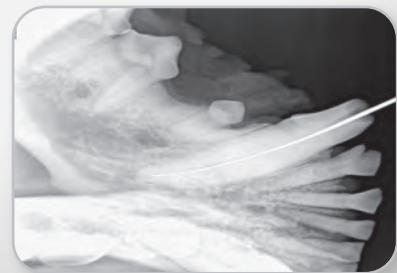
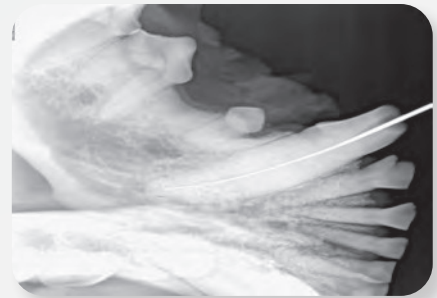


iM3® DR SENSOR Y Size 4

WIDE DYNAMIC RANGE 20 lp/mm

Cat. Code
Y5200



The iM3 DR Sensor Ysize 4 represents a significant leap in size for veterinary dentistry when compared to its predecessors, now similar to the dimensions of a size 4 CR plate at 53.8 x 77.1 x 6.5 mm.

This enlargement allows for a broader and more comprehensive area of imaging, capturing detailed dental structures with greater precision.

The increased size enhances its versatility, accommodating a wider range of animal patients and facilitating efficient diagnoses. This is what veterinary dentists have dreamed of and now iM3 is bringing it to the market.

High Resolution - 20 lp/mm!

iM3 iM3 DR Sensor Ysize 4 makes use of a CsI scintillator as opposed to the more common Gadox-based sensors, resulting in far higher resolution and less noise.

With an impressive resolution of 20 lp/mm (line pairs per mm), it outperforms the typical 12 lp/mm resolution found in conventional sensors. This heightened level of detail and clarity in the captured images allows for more accurate and comprehensive evaluations of dental pathology.



Wide Dynamic Range!

The im3 DR Sensor Ysize 4 has built-in WDR (Wide Dynamic Range). The wider the dynamic range, the better the sensor can read at both high and low doses of X-Ray exposure. As a result, the im3 DR Sensor Ysize 4 is very forgiving and can produce clear, sharp images in more conditions than the competition.

The Perfect Addition!

Compatible with Vet Exam Pro, im3 DR Sensor Ysize 4 is a perfect addition to users of im3 CR 7 or CR 8, or (our size 2 DR sensor).

However, the im3 DR Sensor Ysize 4 is packaged with TWAIN drivers as opposed to its own software suite. This flexibility allows veterinary professionals to utilize their preferred imaging software, providing them with greater control and customization options for their dental radiography workflow.

By being compatible with a wide range of TWAIN-supported programs, the DR sensor ensures a smooth and efficient integration process, eliminating the need for additional software installations and simplifying the overall imaging setup. Veterinarians can confidently embrace this adaptable solution, enhancing their diagnostic capabilities while maintaining the convenience of their chosen dental X-Ray imaging software.

“ I have used the size 4 direct X-Ray sensor, called the Y-sensor, in treatment of multiple bears. The system is very easy to use with the Vet-Exam Pro software. The sensor provides very quick images in high solution. So if you are doing dentistry on large animals, everything from large dogs to big bears, tigers and lions, this system is a “must-have”, especially if you work in the field or out-bush in extreme conditions.

Jens Ruhnau
DVM, Dipl.EVDC
September 2024

FEATURES & BENEFITS

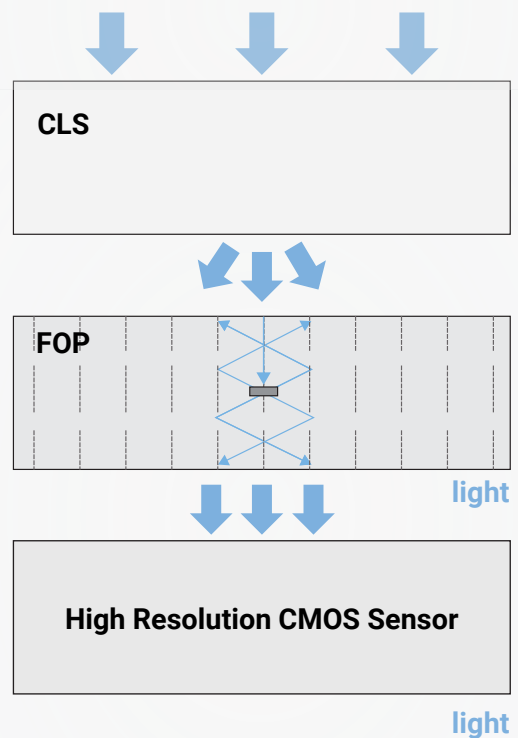
- ✓ WDR (wide dynamic range feature) means no risk of over-exposure to radiation.
- ✓ High Resolution 20 lp/mm, less noise
- ✓ TWAIN drivers make this DR sensor compatible with a wide range of imaging software.

SPECIFICATIONS

MODEL	CHIP TYPE	PIXEL SIZE	DIMENSIONS Width x Length x Depth	ACTIVE AREA (MM)	ACTIVE PIXEL ARRAY	VOLTAGE
im3 DR Sensor Ysize 4	APS CMOS	18.5µm	53.8 x 77.1 x 6.5mm	46.7 x 67.3	2524 x 3640 px	USB: 5.0 V±0.5v
ELECTRICITY CURRENT	POWER	DIGITIZATION	IMAGING TIME	SPATIAL RESOLUTION	THEOROTICAL RESOLUTION	SIGNAL OUTPUT
USB: ≤500mA	≤1W	12/14bit	3~4 s	CsI: ≥20 lp/mm	27 lp/mm	USB 2.0

im3 DR Sensor X size 2 & Y size 4

X-Rays



High resolution, low noise image
even at low and high doses

Typical Dental DR Sensor X-Rays

